



TOTAL BUILDING AREA 153,535 SF
LAND ±18.3 ACRES

- FINISH NOTES:**
- METAL BUILDING COLOR SELECTIONS:
 - POLAR WHITE AT METAL WALLS
 - ASH GRAY AT TRIM
 - FLOOR FINISHES (RE: "FINISH SCHEDULE LEGEND: FORT LUPTON" DOCUMENT PROVIDED BY HALLIBURTON FOR FINISH PRODUCT AND COLOR SELECTIONS):
 - EPOXY AT MANUFACTURING AND LAB (NO EPOXY AT WAREHOUSE AREAS)
 - VCT AT BREAKROOMS AND SHOP OFFICES
 - CERAMIC/PORCELAIN TILE AT RESTROOMS
 - UPGRADED CERAMIC/PORCELAIN TILE AT LOBBY AND RECEPTION AREA
 - SEALED CONCRETE AT LOCKER ROOMS AND SERVER ROOM
 - CARPET AT OFFICES, CONFERENCE ROOMS, CORRIDORS AND STORAGE ROOMS
 - WALL FINISHES (RE: "FINISH SCHEDULE LEGEND: FORT LUPTON" DOCUMENT PROVIDED BY HALLIBURTON FOR FINISH PRODUCT AND COLOR SELECTIONS):
 - SATIN/EGGSHELL PAINT AT OFFICE AREAS
 - CERAMIC TILE WAINSCOT AT OFFICE RESTROOMS
 - FRP WAINSCOT AT SHOP RESTROOMS
 - 10' METAL LINER PANELS AT MANUFACTURING, WAREHOUSE AND LAB GYP. BD. WALLS

- NOTES:**
- PROVIDE PHOTOMETRIC STUDY OF SITE INDICATING:
 - 10 FC AT TRUCK YARD AND TRUCK DOCK TO 65 FT AWAY FROM THE BUILDING, AND AT PIPE RACK AREAS
 - 5 FC AT EMPLOYEE PARKING AND TRUCK YARD BEYOND 65 FT FROM THE BUILDING
 - ANY LIGHT STANDARDS IN DRIVE AREAS TO BE ENCASED IN CONCRETE TO 48" AFF

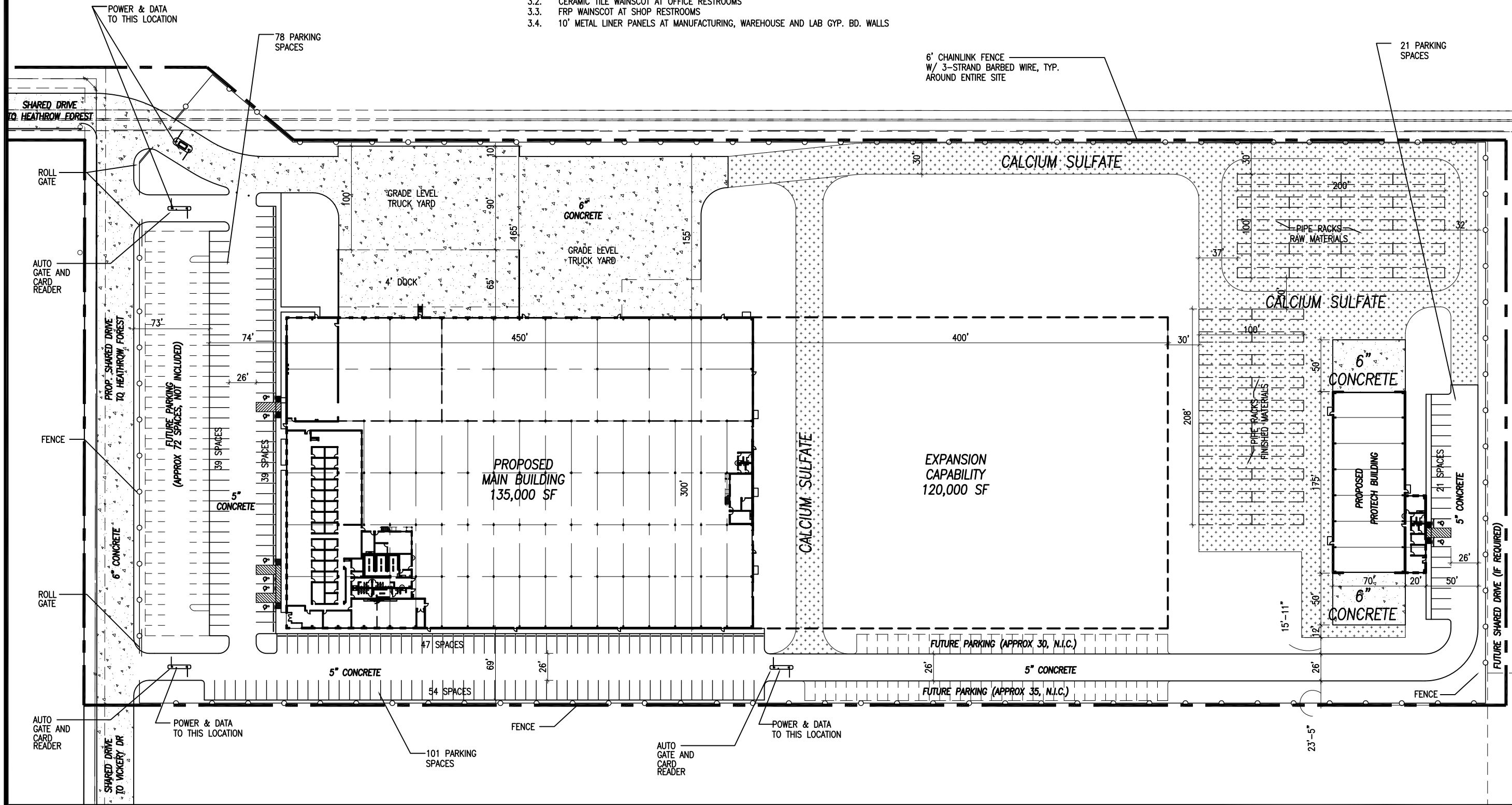


EXHIBIT B PROPOSED SITE PLAN