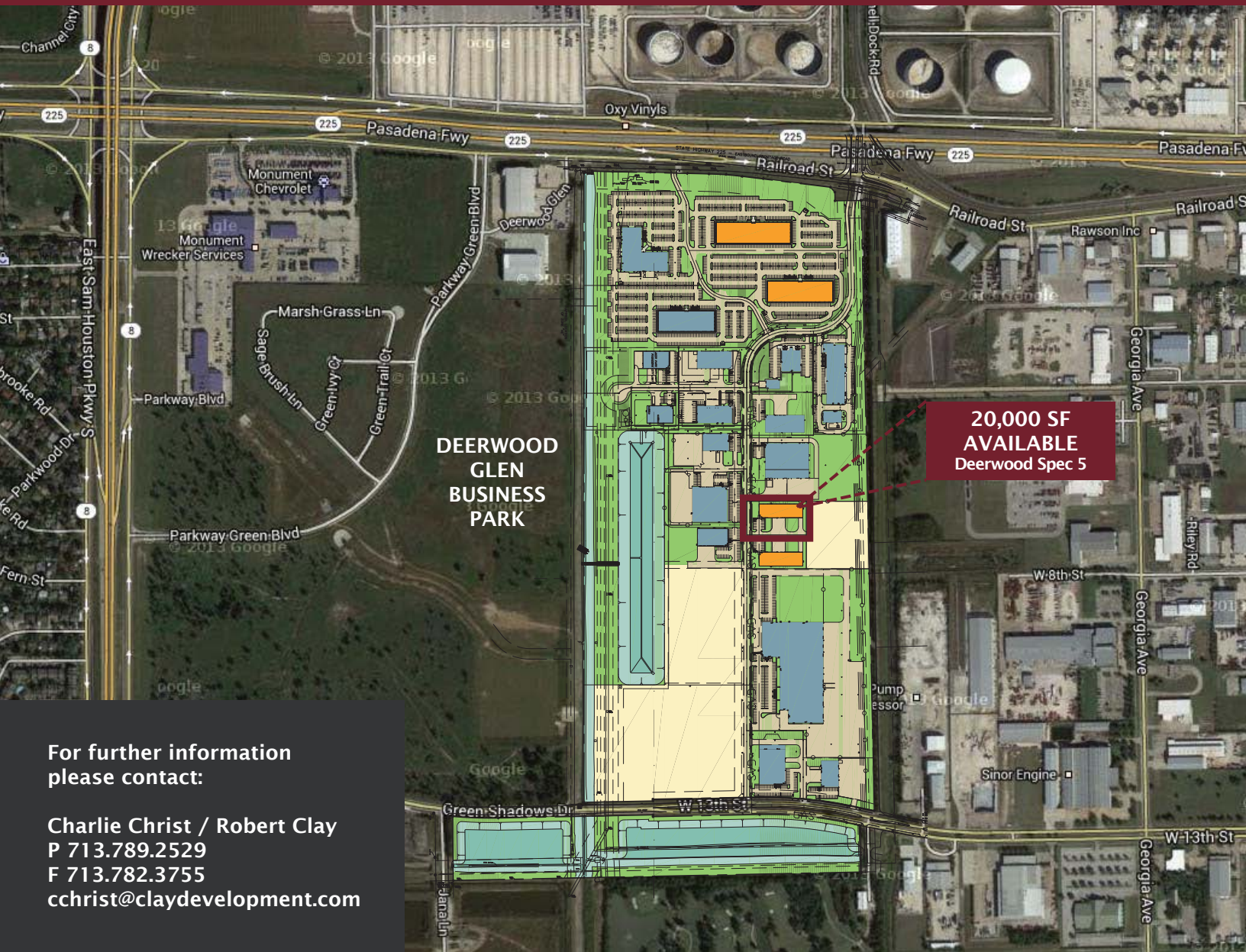


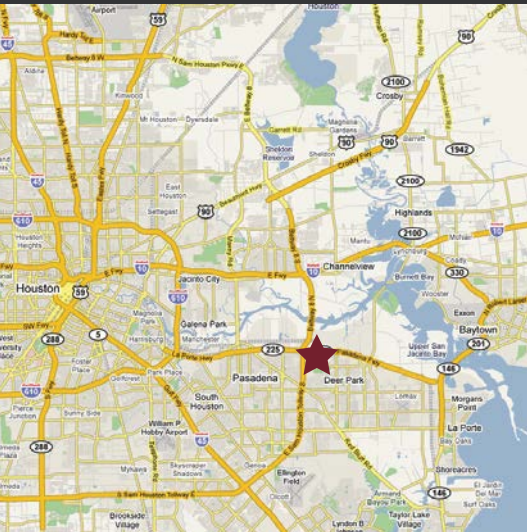
# FOR LEASE OFFICE/MANUFACTURING



**20,000 SF  
AVAILABLE  
Deerwood Spec 5**

For further information  
please contact:

Charlie Christ / Robert Clay  
P 713.789.2529  
F 713.782.3755  
cchrist@claydevelopment.com



## FEATURES

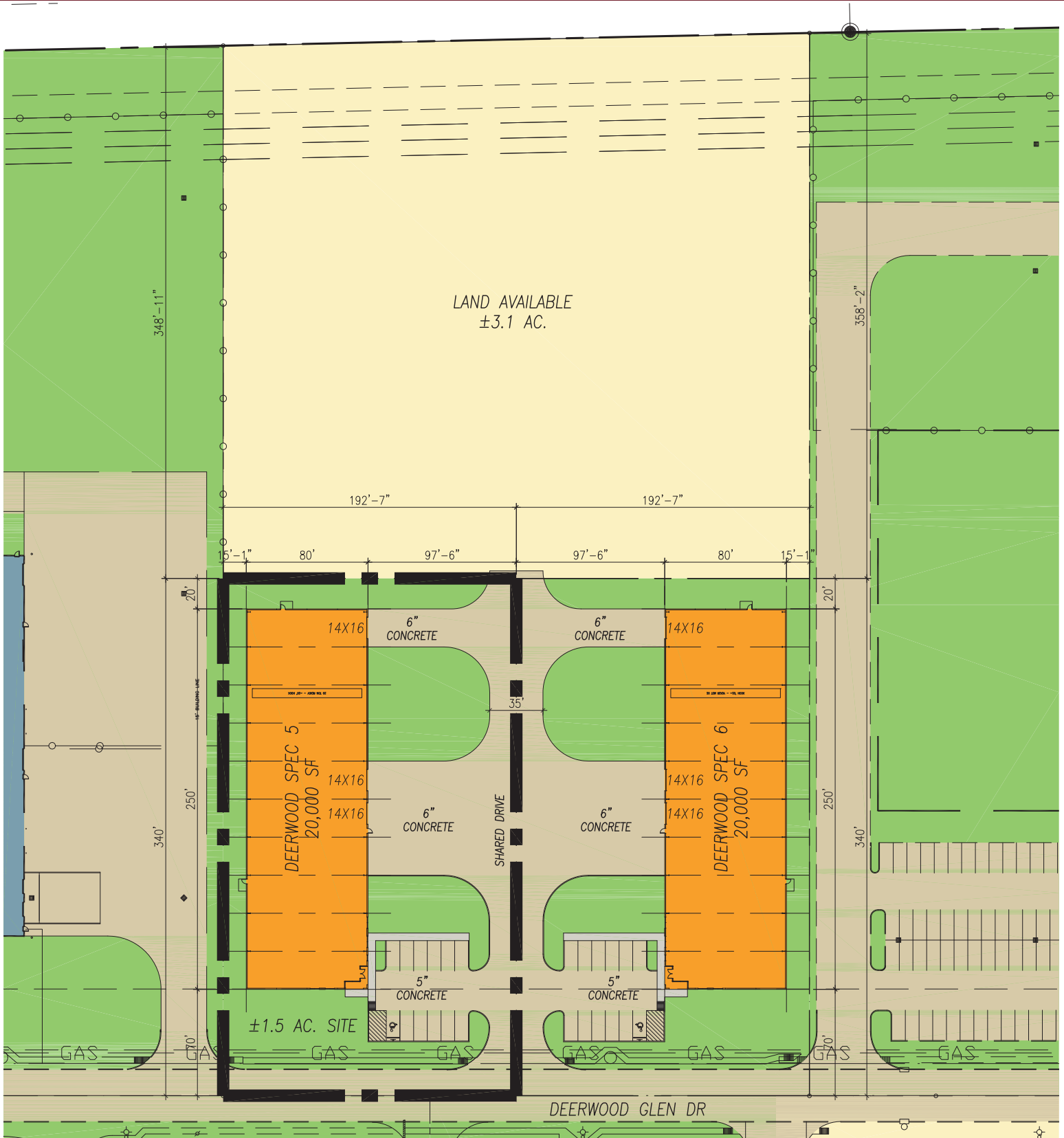
- 20,000 sf manufacturing building available in 1.5 acres
- 20 ton crane ready
- 28 ft eave height, concrete tilt-up panels
- Located on Deerwood Glen Drive, between Hwy 225 and 13th Street
- Excellent access to Beltway 8, Hwy 225 and the Port of Houston
- Deed restricted park with professional management
- City of Deer Park utilities
- Regional detention provided
- ESFR fire sprinkler system available

**CLAY**  
DEVELOPMENT & CONSTRUCTION INC.  
COMMERCIAL DESIGN-BUILDERS

# 307 DEERWOOD GLEN DRIVE DEERWOOD GLEN BUSINESS PARK



# FOR LEASE OFFICE/MANUFACTURING



## DEERWOOD SPEC 5 DEERWOOD GLEN BUSINESS PARK

