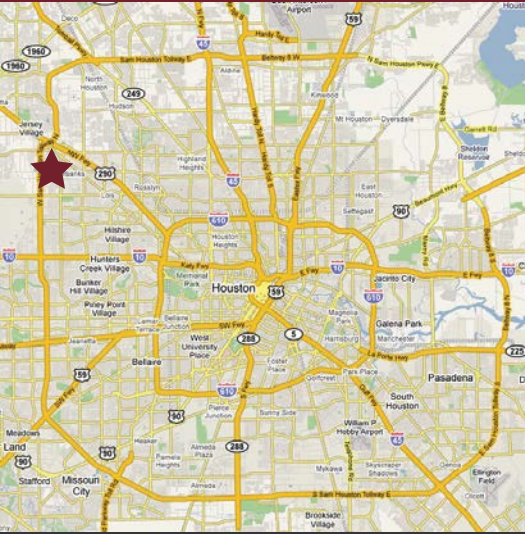


# FOR LEASE OFFICE / WAREHOUSE



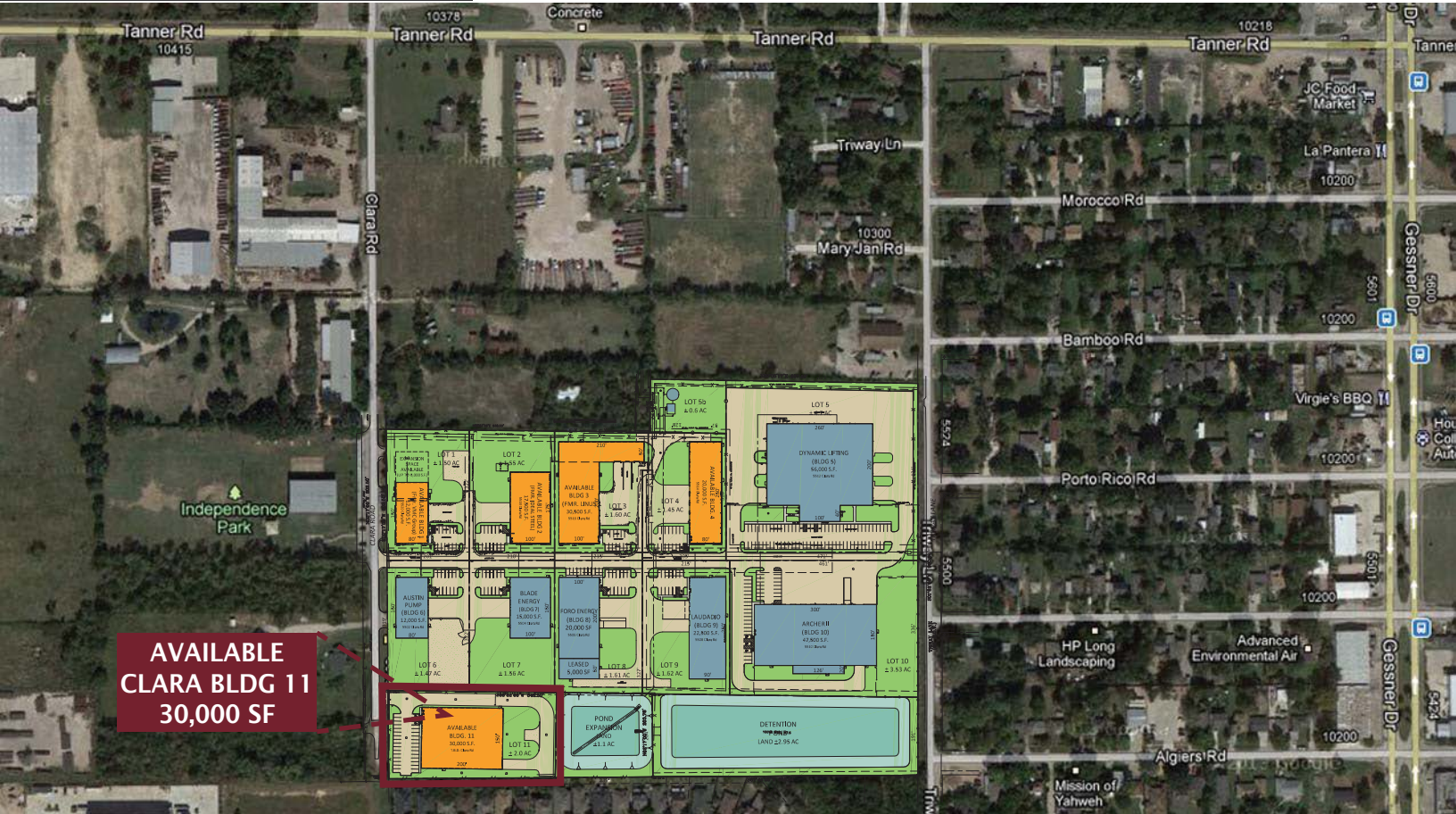
Not actual building

For further information  
please contact:

**Copeland Rhea / Charlie Christ**  
P 713.789.2529  
F 713.782.3755  
crhea@claydevelopment.com

## FEATURES

- 30,000 sf dock high/grade level warehouse building
- Located on Clara Rd just south of Tanner Rd in Northwest Houston with excellent access to Beltway 8, Hwy 290 & I-10
- 29 ft. eave height
- 20 ton crane-ready
- City of Houston utilities; outside Houston city limits

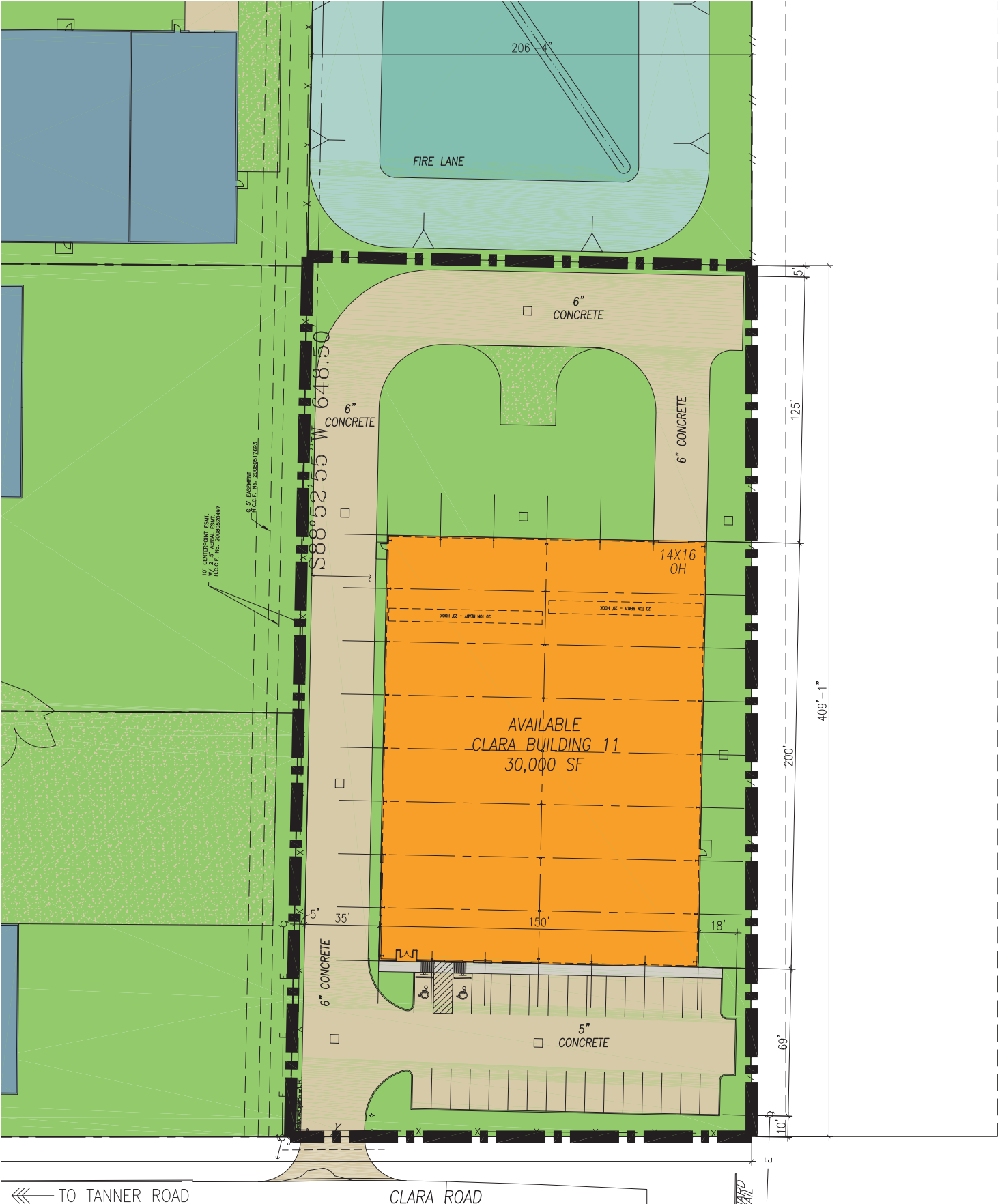


**AVAILABLE  
CLARA BLDG 11  
30,000 SF**

**5424 CLARA ROAD  
HARRIS COUNTY, TX**



# FOR LEASE OFFICE / WAREHOUSE



← TO TANNER ROAD

CLARA ROAD

## CLARA BUILDING 11 HARRIS COUNTY, TX

