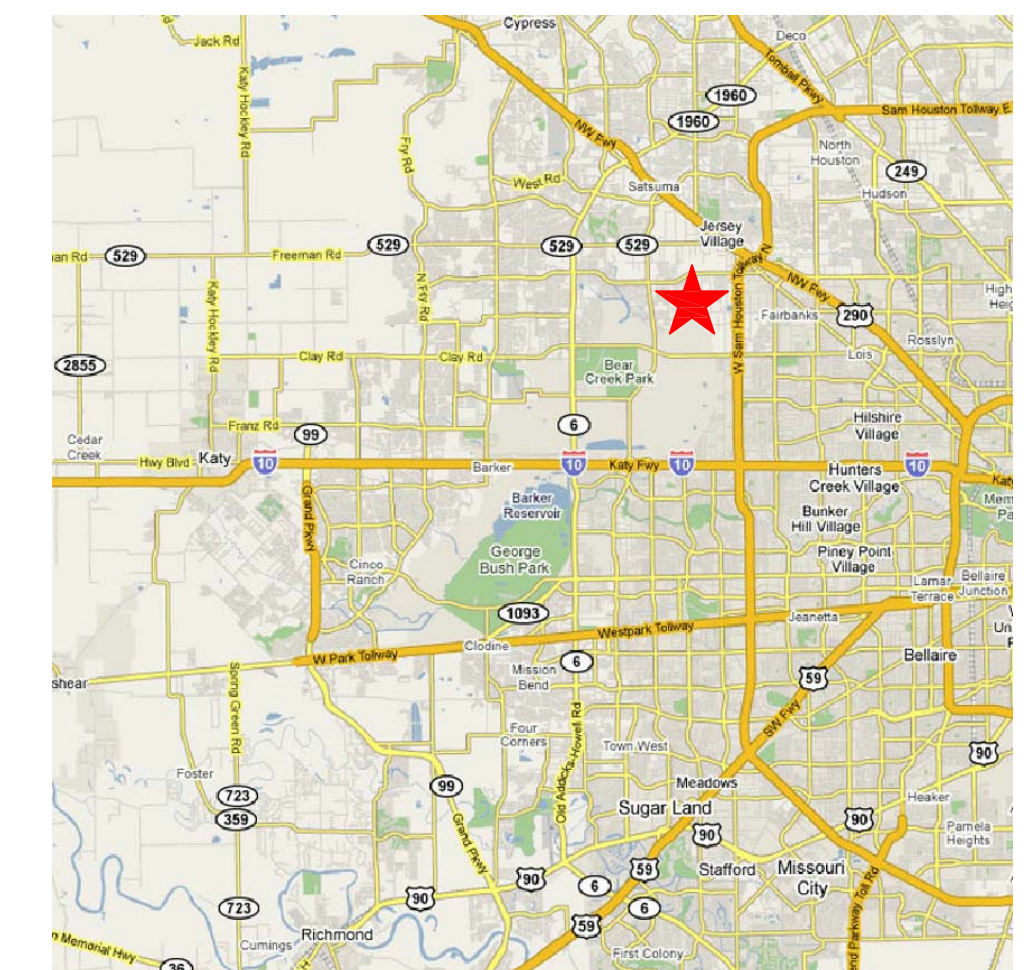
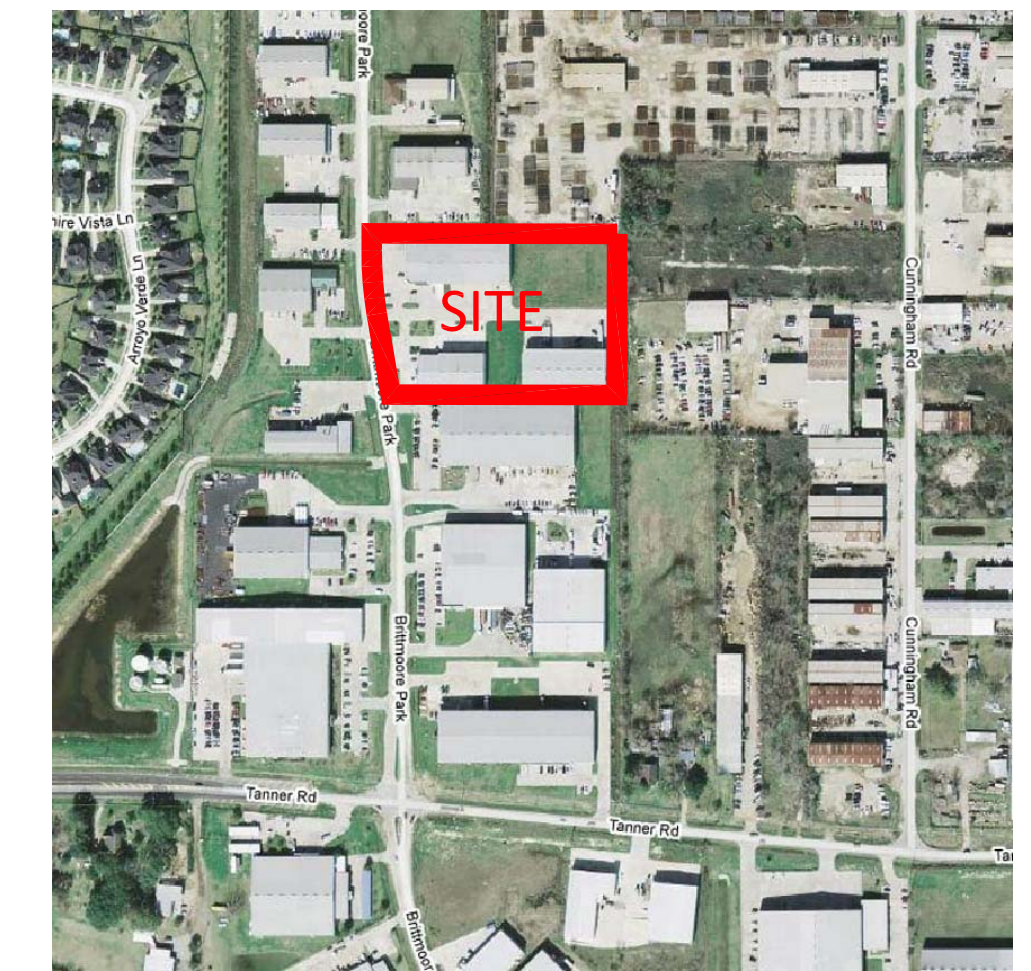


BRITTMOORE-TANNER BUSINESS PARK

HARRIS COUNTY, TEXAS
 LAND ± 239,238 SQ. FT. ~ 5.5 AC.
 3 BUILDINGS ~60,700 SF



KEY

- LEASE SPACE AVAILABLE
- LAND AVAILABLE
- PROPOSED BUILDING / LAND AVAILABLE
- LEASED/SOLD BUILDING

SITE PLAN

Jan 29, 2016



5599 SAN FELIPE, SUITE 1440
 HOUSTON, TX 77057
 PHONE (713)789-2529
 FAX (713)782-3755

